



VRZ – double-shaft pre shredder for continuous operation in demanding applications

Efficient and robust – an innovative, high-performance
waste shredder "Made in Germany"

Robust, durable and energy-efficient

The new Vecoplan VRZ 2500 waste shredder is designed for tough, continuous operation in recycling and waste-processing facilities. Its rugged double-shaft rotor system rips the input material – a highly efficient means of reducing inhomogeneous waste into sortable shapes and sizes for extraction of recyclable materials, power generation or further processing. The output is suitable for storage and transport.



Ideal for varying types of input

Input material

- Domestic waste (municipal waste)
- Industrial waste
- Mixed construction waste
- Bulky waste
- Waste wood
- Rootstocks
- Organic waste
- Straw

Output material

Output material in a sortable shape and size
90% < 300 mm



Wide range of applications:

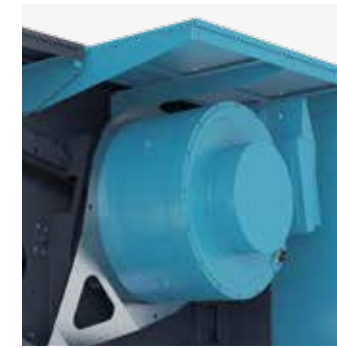
- Waste-incineration facilities
- Mechanical and biological reprocessing systems for domestic waste
- Waste wood processing facilities
- Facilities for processing organic waste
- Waste-to-energy plants
- Industrial waste processing facilities, pre-sorting facilities
- Sorting facilities
- Recycling facilities
- Production of refuse-derived fuel



State-of-the-art Vecoplan technology

Our HiTorc drive has no mechanical components like belts, gear wheels, flywheels or clutches. This makes the shredder much more robust and energy-efficient. Major maintenance work is almost totally unnecessary, resulting in significantly lower operating costs and maximising the overall efficiency of the drive. Another positive side-effect of the electric direct drive is its very silent operation. There is no quieter drive on the market.

The most solid cutting table is designed to allow fine waste like stones, sand and small metal parts to fall through and be discharged. This minimises wear and tear costs.



HiTorc drive

- Frequency-controlled, powerful high-torque motor
- Variably adjustable speed range
- Foreign object detection
- Highly dynamic drive thanks to fast reversing and restarting
- Synchronous motor as a direct drive without a mechanical drive train
- Highest possible torque at low speed
- Problem-free start-up phase, even with a full machine
- Maintenance-free and wear-free
- Virtually noiseless



Rotor

- Rotor diameter 860 mm
- 7 ripper teeth per rotor
- Optional: 9 ripper teeth per rotor



Cutting unit

- Exchangeable
- Fitted wear plates
- Significantly shorter downtimes



Enjoy the benefits!

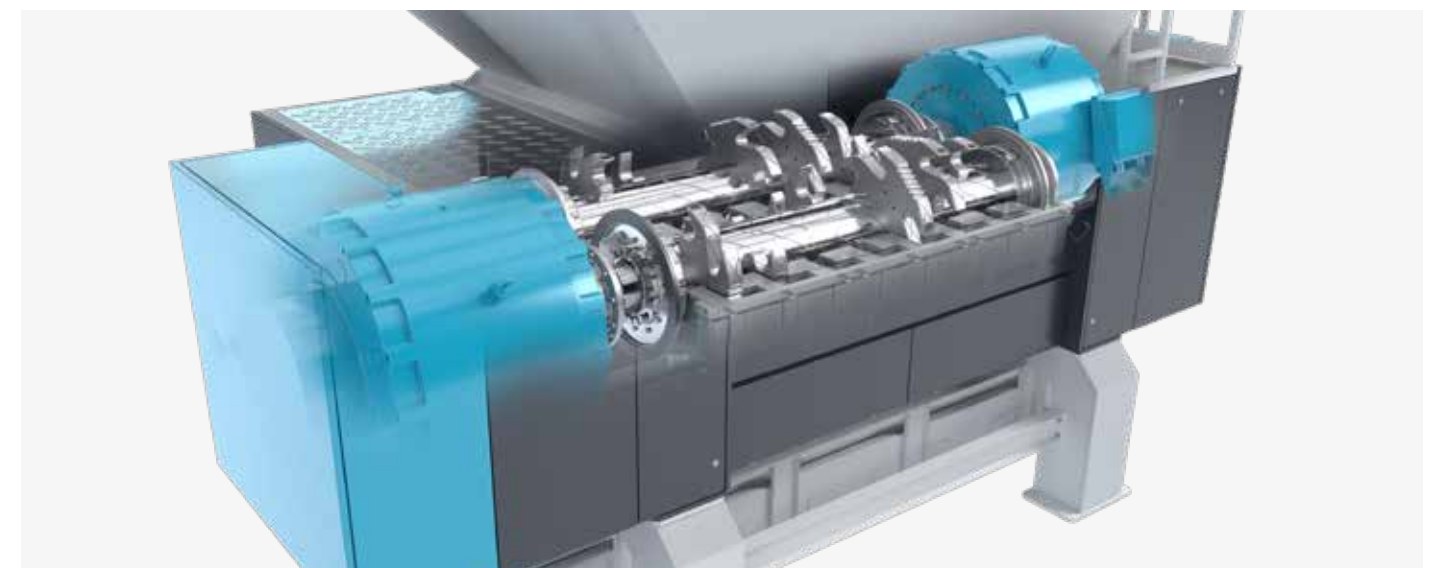
Your advantages

- Robust design
- Maximum reliability and availability
- Optimised for maintenance and service
- Increased energy efficiency
- Lower operating costs, less wear

Technical data

Details		VRZ 2500
Infeed opening (W x L)	mm	2525 x 2050
Rotor dimensions	mm	Ø 860 x 2515
Rotor weight	t	1.9
Rotor speed	rpm	25–65
Cutting unit	qty	1
Weight approx.	t	24.5
Type of cutters		Ripper teeth
Number of cutters	qty	2 x 7
Motor power	kW	2 x 138
Throughput capacity	t/h	up to 80
Torque	Nm	up to 80,000

Subject to technical changes without notice. Detailed dimension drawings and load data available on request. Date: 06/2020



Vecoplan®

Vecoplan AG
Vor der Bitz 10
56470 Bad Marienberg | Germany
phone +49 2661 62 67-0
fax +49 2661 62 67-70
welcome@vecoplan.com
www.vecoplan.com